

Instructions for Larger Topper / Display with Martians & Saucer Kit:

Installation Instructions are included for:

Martians & Saucer Topper / Display Kit for any Pinball machine or as a Display

Note: Comes with either a backbox, circuit board wiring harness, for the Chicago Gaming remakes, or wall plug in power supply.

© 2021 Mick Rogala mrogala1@comcast.net <http://mickspinball.com>

All components were inspected and tested before shipping.

Topper/Display Kit Installation

The Smaller Kit comes fully assembled. The Larger Kit requires some assembly and includes:

- Topper Backboard
- Topper Platform
- Panhead Screws to Attach Platform to Backboard

Both Kits include:

- Either the Chicago Gaming Company Remake Wiring Harness or Wall Plug in Power Supply
- Velcro base stick-on circles, to attach to the backboard top or anywhere else as needed

INSTRUCTIONS for Assembly of Larger Topper / Display

1. Carefully remove all parts from the box
2. Insert the two panhead screws (from back to front) through the two predrilled holes in the backboard until the screw tips extend about ¼ inch through the backboard.

Insert Pan Head Screws through pre-drilled holes.



3. Remove the RED cellophane covering from the double-sided tape attached to the topper backboard.

Remove RED cellophane.



4. The Saucer and Martian wiring assembly is below the baseboard. Thread the wiring assembly through the hole in the backboard.

Insert wiring assembly through backboard.



5. Position Base on Backboard Support with screws aligned with pre-drilled holes and press together.

Align screws with pre-drilled holes and press.



6. Tighten screws to secure base to backboard. Do not over tighten.

Note: If base and backboard are not secure, loosen and retighten screws one at a time while pressing the base and backboard together, to make for a tight fit.

7. Straighten Martians on Mounting Springs if they have shifted during shipping.

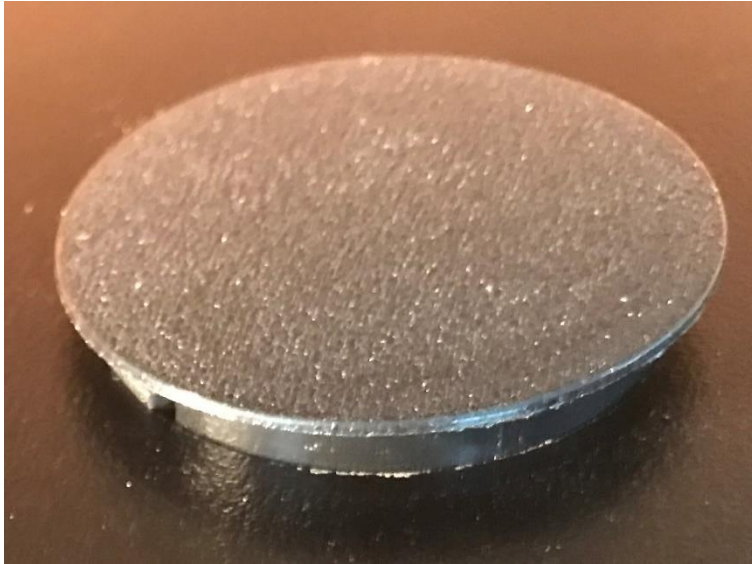
8. Place Saucer top onto Saucer with seam toward the rear of the topper



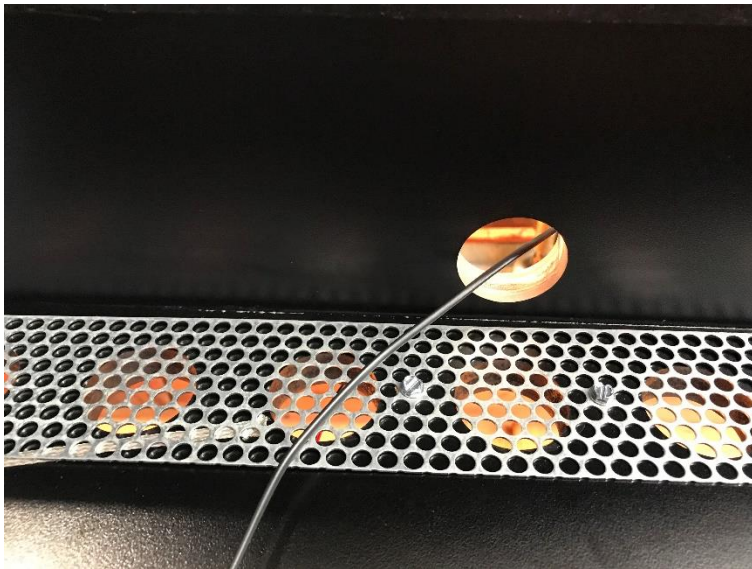
Kit size is 22" Wide, 10" Tall, 8.5" Deep.

INSTRUCTIONS for Plugging into AFMr Circuit Board

9. Shut power off on AFMr Pinball machine.
10. Remove the back glass and rest on cabinet.
11. Lift and remove plastic hole cover from top of back cabinet.

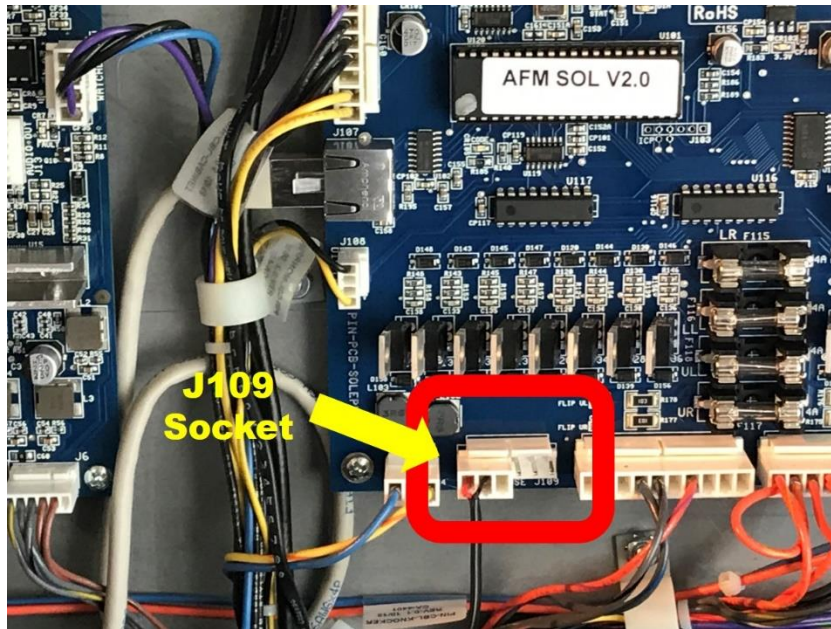


12. Insert wiring harness into back cabinet through hole on top of back cabinet.



13. Clean top of Back Cabinet

14. Peel plastic cover from each of 4 Velcro fasteners and attach it to bottom of Topper.
15. Plug Molex connector into the left 3 positions of J109 socket, ensuring that the **Red** wire goes to Pin number one. The J109 socket is located at the bottom left of the solenoid power circuit board in the Back Cabinet.



16. Tuck excess wiring into existing wiring harness as shown above.
17. Use enclosed plastic ties if needed.
18. Re-attach back glass.
19. Done, enjoy!

Please contact me with any questions you may have.

Thank you, Mick Rogala

<http://mickspinball.com>